

ANNUAL REPORT 2012

The Doctoral School of Social Sciences



AALBORG UNIVERSITY
DENMARK



PREFACE

It is our great pleasure to present the Annual Report 2012 for The Doctoral School of Social Sciences at Aalborg University (AAU). The report describes status and lists the most important activities at the Doctoral School and the seven affiliated doctoral programmes. An important task in 2012 was the preparation and implementation of a strategic action plan for the school and an intensified internationalisation effort. The Doctoral School enrolled 50 new PhD students in 2012, which means that the faculty now has the highest share of PhD students in social sciences in Denmark in relation to other academic staff.

The annual report consists of two parts. The first part concerns the Doctoral School's general development and activities. It describes the major focus areas, key figures and benchmarks, the networks, internationalisation and doctoral programmes. The second part consists of reports from the seven doctoral programmes, including an overview of active PhD students and completed theses. The final pages include an organisational overview, a presentation of the secretariat, the PhD committee and Delphi, the PhD students' organisation.

Annual Report 2012 and 2013 will be a central foundation for the international evaluation of the doctoral school in 2014.

Annual Report 2012 is prepared by the director and the secretariat of the doctoral school with contributions from the heads of the doctoral programmes.

Ann-Dorte Christensen
Director of the Doctoral School

Hanne Kathrine Krogstrup
Dean

CONTENTS

REPORT FROM DOCTORAL SCHOOL	4
- Strategic Action Plan 2012–15	5
- Status and Trends	7
- Networks and Cross-Institutional Partnerships	13
- International Research Education Partnerships	15
- Phd Courses in 2012	16
REPORT FROM THE DOCTORAL PROGRAMMES	18
- Sociology and Social Work	18
- Political Science	21
- Business and Innovation Economics	24
- SPIRIT	27
- Law and Business Law	29
- Education, Learning and Philosophy	31
OUTLINE DOCTORAL SCHOOL	33
DELPHI	34



REPORT FROM DOCTORAL SCHOOL

Strategic Action Plan 2012-15

The overall objective of the Doctoral School of Social Sciences is to ensure research programme of high quality, effectiveness and high international standard in the Faculty of Social Sciences' core activities in terms of research and teaching.

The doctoral school offers seven doctoral programmes:

- Sociology and Social Work
- Political Science
- Innovation Economic Programme
- Business Economic Programme
- SPIRIT
- Law and Business Law
- Education and Learning

The doctoral school creates the framework for an active national and international research education, where the PhD student in dialogue with supervisor and colleagues completes an independent, scientific project that culminates in a PhD thesis. It is important for the school to create the best possible study environment to motivate and encourage PhD students to develop their academic competences in the most innovative and creative way. This requires that the school offers a broad range of doctoral programmes, supports the PhD students' opportunities to visit universities abroad and generally accumulates knowledge of relevant partners within as well as outside academia.

The Doctoral School of Social Sciences was established in 2008 as part of the decision to place responsibility for the PhD study at the individual institutions (faculties) and no longer in cross-institutional networks. The school is organised with a director of the doctoral school, a secretariat and a PhD committee which handles the school's academic policy in close cooperation with the faculty's research and internationalisation strategies. On 1 April 2012, Professor Ann-Dorte Christensen succeeded Professor Jørgen Gulddahl Rasmussen as director of the school.

Over the past five years, the number of PhD students at the doctoral school has increased steadily from 99 in 2008 to 145 in 2012. The increase is a result of the government's objective to promote research education, and of a strengthened effort by The Faculty of Social Sciences. Over the past two years the Faculty has thus had a target of 40 new PhD students per year, among other things by increased use of co-financing.

In August 2012 a four-year strategic action plan for The Doctoral School of Social Sciences was adopted. The plan was produced with reference to the faculty strategies and consists of the following nine points. These core areas will be assessed below in terms of what has been obtained and launched in 2012, with special emphasis on the second half of the year. The plan with sub-targets and monitoring is accessible at <http://www.fak.samf.aau.dk/phd>.

• Efficiency improvements and completion of present and future PhD projects

In order to streamline and increase flexibility and completion, the doctoral school has defined some guidelines for different types of PhD theses and completion. We have increased the focus on the scope of the PhD students' teaching and dissemination obligations, and we have prepared a list of relevant forms of knowledge dissemination besides teaching. Finally, we maintain our focus on regular individual evaluations with special emphasis on 12 and 30 months' interviews.

Expectations to the PhD supervisor role have been clarified and will in 2013 be followed up by PhD supervisor courses, which will eventually become mandatory. Finally, criteria and guidelines for assessment of PhD theses have been clarified and are being implemented.

• Strengthening the doctoral school's international profile, including development of joint and double degrees

The doctoral school is bilingual and in the course of 2012 all relevant documents have been made available in both Danish and English. We are working towards

increased internationalisation via partnerships with universities abroad, e.g. via agreements about joint and double degrees. Internationalisation is strengthened on an on-going basis by inviting foreign keynotes to PhD courses and via participation in the European doctoral cooperation under the auspices of European University Association – Council for Doctoral Education (EUA-CDE). See further information below.

• Embedment of previous cross-institutional doctoral programmes and development of new inter-disciplinary PhD cooperation agreements in Denmark and at AAU

Along with the expiry of the cross-institutional doctoral programmes, various forms of consolidation and embedment have occurred of these often well-established PhD partnerships, which still constitute a core in the doctoral school's work, e.g. in terms of offering doctoral programmes. As far as internal cooperation at AAU, the doctoral school's leadership has held several meetings and in the future these meetings will be intensified and will be held app. twice per semester. See further information below.

• Development of PhD courses

After the abolition of the cross-institutional doctoral programmes, the doctoral school's course activities have intensified with development of new and embedment of established courses. The courses are offered as close to the academic environments and doctoral programmes as possible. Two types of courses are offered: a) subject specific courses, which relate to the programme's research field; b) generic courses in theory of science,



Strategic Action Plan 2012-15

methods, pedagogy and dissemination. The courses are offered by the doctoral school and the doctoral programmes. The PhD courses are published in the national database for doctoral courses in Denmark and via the national and international network of involved research environments. See section 6 for a complete list of PhD courses in 2012.

• Ensuring optimal everyday conditions around the PhD study

Over the past few years, the doctoral school has focused on PhD supervision in terms of quality and extent. It has been clarified that the PhD students' teaching and dissemination obligation cannot be exceeded and that these obligations must be made as flexible and relevant as possible in relation to the topic of the PhD project. Due to the extensive intake of PhD students, intensified talent and career development is planned. This will take place in cooperation with national and European initiatives in the area. Finally, the doctoral school will incorporate the new studies about PhD coaching as well as about stress and well-being among PhD students in its work in 2013.

• Support to the PhD students' organisations and network

The doctoral school supports Delphi, an organisation of all PhD students in social sciences and humanities. In addition, the School encourages establishment of PhD networks in the individual programmes and it has, for example, supported process-oriented and decentralised workshops in these networks.

• Continuing focus on administrative efficiency improvements

The doctoral school participates in AAU's cross-faculty experience network for administrative staff in the PhD area. Increased digitalisation and administrative streamlining should speed up casework in connection with enrolment of PhD students and PhD assessments and defence. During the implementation descriptions of procedures and templates are updated on the school's website, e.g. mini manual for all PhD supervisors and PhD students. Finally, the IT system PhD Manager has been implemented and is used across the four doctoral schools at AAU. From the Doctoral School of Social Sciences, the doctoral programme Political Science is test pilot in the further development of PhD Manager. The school's website is an important tool in terms of administration and dissemination, and with over 20,000 page references in 2012 it is a popular site.

• Annual reports and ongoing progress reports for the development

In addition to annual reports, the school compiles a six month status of its development compared to other doctoral schools at AAU and to other Danish social science doctoral schools.

• International evaluation

An international evaluation of the doctoral school will be conducted in 2014. In fall 2013 an external evaluation panel will be formed. The evaluation report will be prepared in spring 2014, and it is expected that the evaluation can be conducted mid-2014.

Status and Trends

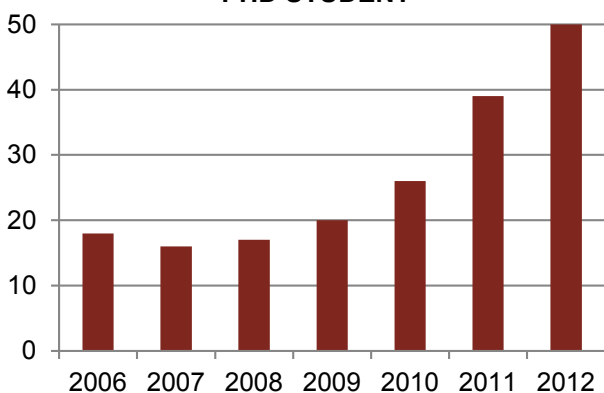
This section accounts for significant key figures and benchmarks for the doctoral school. For further information, please see the memorandum on status and progress on the school's website.

PHD POPULATION AND ENROLMENT FREQUENCY

The PhD population and the number of enrolled PhD students have increased significantly. The PhD population is currently at its highest level, and the number of newly enrolled PhD students has grown by more than 200% from 2007 to 2012. If we relate this number to the number of academic staff, the Faculty of Social Sciences, AAU has the highest ratio of PhD students among all social science faculties in Denmark.

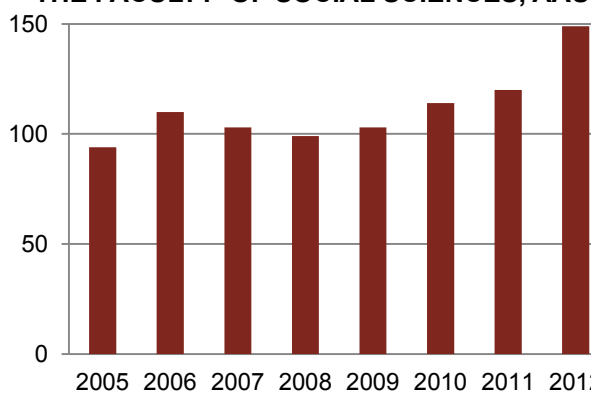
The increased volume at the doctoral school obviously means several positive opportunities in terms of recruiting highly qualified researchers and teachers. However, it also means challenges, not least an obligation to continuously incorporating broad career opportunities in the PhD study.

TREND IN ANNUAL ENROLMENT OF PHD STUDENT



Source: AAU's PhD Manager system

TREND IN THE PHD POPULATION AT THE FACULTY OF SOCIAL SCIENCES, AAU



Source: AAU's PhD Manager system.

Note: The PhD population is calculated on the basis of enrolled PhD students up to and including 31 December for each year.

Note: The PhD population includes PhD students on sabbatical leave and PhD students who have submitted their theses, but are awaiting assessment and/or award of degree.

TREND IN PHD ENROLMENTS AT AAU

	2007	2008	2009	2010	2011	2012
Social Sciences	16	17	20	26	39	50
Humanities	10	20	21	32	39	37
Health	0	0	0	22	32	51
TechSci	119	149	196	187	162	175

Source: Danish Universities and AAU's PhD Manager system.



Status and Trends

PHD ENROLMENTS AT SOCIAL SCIENCES, AAU, 2012

Sociologi and Social Work	12
Political Science	10
Business and Innovation Economics	12
SPIRIT	3
Law and Business Law	6
Education, Learning and Philosophy	7

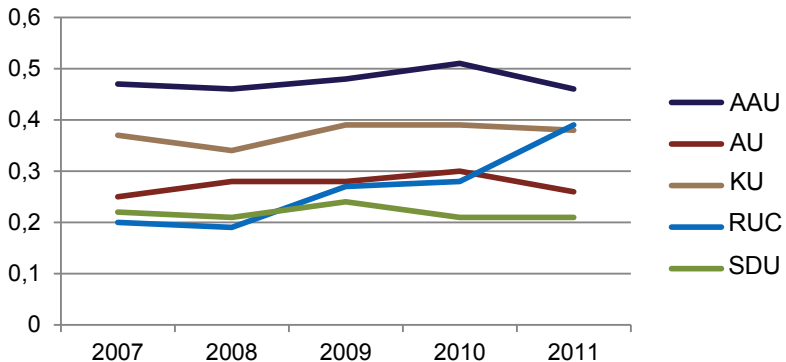
Source: AAU's PhD Manager system

TREND IN THE PHD POPULATION AT AAU

	2007	2008	2009	2010	2011	2012
Social Sciences	103	99	103	144	120	149
Humanities	65	79	83	105	137	143
Health	0	0	0	51	84	126
TechSci	461	459	520	472	619	637

Source: Danish Universities and AAU's PhD Manager system

TREND IN NUMBER OF PHD STUDENTS PER ACADEMIC STAFF MEMBER AT SOCIAL SCIENCE FACULTIES



Source: Danish Universities
Note: Academic staff is calculated as full-year equivalent for part-time and full-time academic staff.
Note: Number of PhD students is number of enrolled PhD students up to and including 31 December for each year.

TREND IN PHD DEGREES AWARDED

The share of degrees awarded in 2012 shows that the doctoral school is facing some challenges in terms of completion of theses. However, the interim prognosis for 2013-with 12 theses undergoing assessment in early January - indicates a significant increase in degrees awarded during 2013. In any case, the trend documents the need to focus on completion - i.e. the framework for PhD studies, PhD supervision and streamlining of the assessment process – which is planned for 2013.

TREND IN PHD DEGREES AWARDED

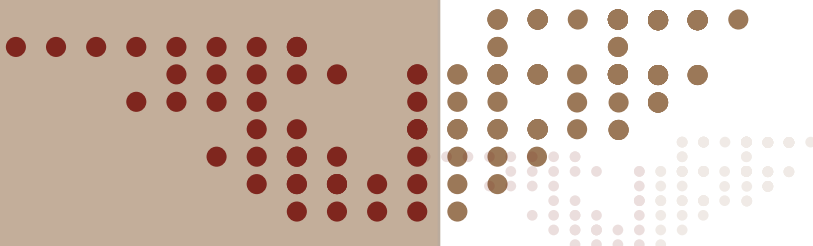
	2007	2008	2009	2010	2011	2012
Social Sciences	16	12	8	17	18	12
Humanities	13	9	8	13	9	18
Health	0	0	0	17	17	17
TechSci	68	105	104	67	92	122

Source: Danish Universities and AAU's PhD Manager system
Note: Degrees awarded are registered in connection with approval by the Academic Council.
Note: The low number for Social Sciences in 2012 should be read in context with the fact that 12 theses are undergoing assessment early January 2013. Moreover, some variation must be expected due to relatively low values.

DEGREES AWARDED AT SOCIAL SCIENCES, AAU, 2012

Sociologi and Social Work	3
Political Science	3
Business and Innovation Economics	4
SPIRIT	2
Law and Business Law	0
Education, Learning and Philosophy	0

Source: AAU's PhD Manager system





Status and Trends

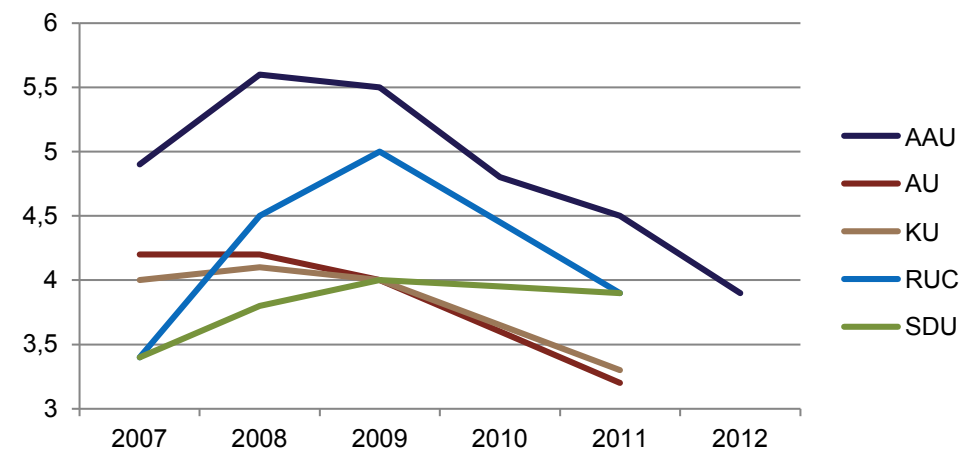
AVERAGE DURATION OF STUDY

Over the past four years, the average duration of study for social science PhD students at AAU has dropped from 5.6 to 3.9 years, which puts Social Sciences, AAU at the same level as other faculties of social sciences in Denmark. The positive trend commits the faculty to continued focus on the target areas listed in the doctoral school's strategic action plan regarding efficiency and completion of current and future PhD projects.

FORMS OF FINANCING

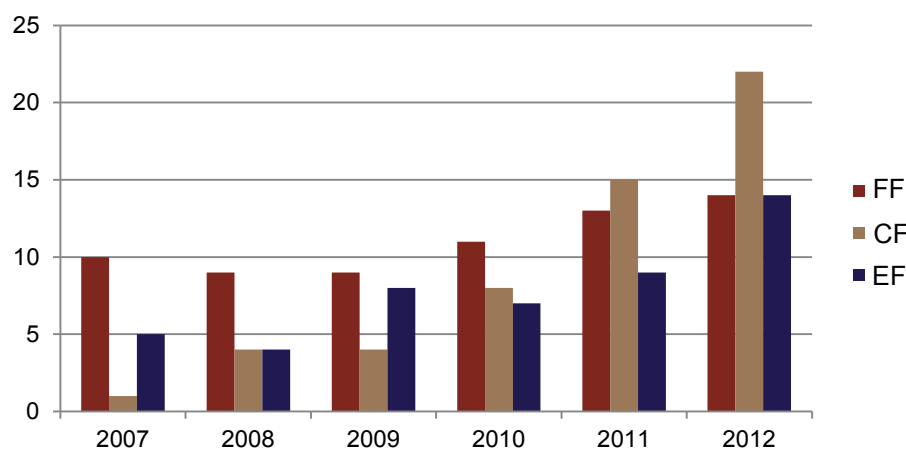
In 2012, the number of externally financed PhD projects for the first time reached the level of fully financed PhD projects. The number of co-financed projects has risen significantly from 1 in 2007 to 22 in 2012. The remarkable increase in external funding gives rise to evaluating the special terms of employment and research associated with this type of financing. In addition, we should evaluate the effect of this development on the depth and width of the overall research and research education profile.

TREND IN AVERAGE DURATION OF STUDY AT SOCIAL SCIENCE FACULTIES



Source: Danish Agency for Universities and Internationalisation and Danish Universities
Note: Since values for the other universities in 2010 are not available in the statistical data, a straight line is drawn from the known values in 2009 to the known values in 2011.
Note: Duration of study is the period from enrolment until the Academic Council awards the degree.
Note: Sabbaticals (maternity/paternity leave and sickness) are subtracted in the statistics.

TREND IN FORMS OF FINANCING



Source: Danish Agency for Universities and Internationalisation and Danish Universities
Note: FF = fully financed; CF = co-financed; EF = externally financed (according to enrolments per year).
Note: Fully financed projects are at least 90% internally funded; externally financed projects are at least 90% externally funded. The remainder are here defined as co-funded projects.



Status and Trends

INTERNATIONAL PH.D.-STUDENTS

The number of international students has increased, but their share of the total number of PhD students is stagnating. Moreover, the distribution of international students across the doctoral programmes is uneven. The vast majority is enrolled in the economics programmes and SPIRIT.

TREND IN NUMBER OF INTERNATIONAL PHD STUDENTS AT SOCIAL SCIENCES, AAU

	2007	2008	2009	2010	2011	2012
PhD population	103	99	103	144	120	149
International PhDs	12	13	15	26	25	34
Share in per cent	11,7	13,1	14,6	22,8	17,9	22,8

Source: AAU's PhD Manager system
Note: International PhD students are defined as enrolled PhD students with non-Danish citizenship.

INTERNATIONAL PHD STUDENTS, SOCIAL SCIENCES, AAU, 2012

Doctoral programme	Int. PhD	Population	Share in %
Sociology and Social Work	0	39	0
Political Science	4	31	12,9
Business and Innovation Economics	18	36	50
SPIRIT	7	13	53,9
Law and Business Law	0	11	0
Education, Learning and Philosophy	5	19	26,3

Source: AAU's PhD Manager system

Networks and Cross-Institutional Partnerships

The PhD programme at the Doctoral School of Social Sciences has to a large extent been developed in close cooperation with other institutions. The partnership is based on the many Danish and international networks in which the active research environments participate as well as on more formal doctoral programme partnerships, which were earlier placed in cross-institutional doctoral schools and networks before it was decided to embed the PhD programme at the individual institutions. In recent years, several cross-institutional grants have expired, but in most areas the partnership has been imbedded and continued. Below we will describe these embedments and some of the most important national partnerships in which the doctoral school has been and continues to be involved.

FiOL

FiOL is a cross-university doctoral school programme in organisational and management theory with participation by Aalborg University, Roskilde University, University of Southern Denmark and Aarhus University. It was funded by the Danish Agency for Science, Technology and Innovation 2005-2010 and after that via contributions from the participating institutions. The programme regularly offers general as well as more specific doctoral study programmes in organisation and management. The courses are directed at both Danish and international students. The programme is currently managed by AU. Jørgen Gulddahl Rasmussen from AAU was member of the board until August 2012 when Christian Richter Østergaard took over. The Doctoral School of Social Sciences contributes DKKs 30,000 annually to FiOL and various teachers.

JurForsk

The Danish Legal Research Education Programme (JurForsk) is a partnership between University of Copenhagen, Aarhus University, University of Southern Denmark, Aalborg University and CBS. Activities began in 2007 with a five-year grant from The Danish Agency for Science, Technology and Innovation. Since 1 January 2012, the partnership has been funded by contributions from the participating institutions listed above. Programme manager and daily leader is Professor Palle Bo Madsen. AAU is represented by John Klausen. JurForsk's objective is a legal research education of high and uniform quality. The network also works to expand existing international and Nordic partnerships and networks between PhD students. The Doctoral School of Social Science, AAU contributes DKK 20,000 annually to JurForsk.

Welfare and Diversity

The programme focuses on welfare research with incorporation of different academic disciplines (sociology, political science, economics, social work, gender and ethnicity research etc.). The programme, which was funded by The Danish Agency for Science, Technology and Innovation from 2003-2012, has been embedded at Roskilde University and AAU, but with participation by University of Southern Denmark and the Danish National Centre for Social Research. Activity in the programme has increased over the year with 56 PhD courses and 60 international keynotes. AAU and Roskilde University



Networks and Cross-Institutional Partnerships

have shared administrative responsibilities. In continuation of the programme, the Doctoral Network: Welfare, Gender and Diversity has been established to ensure that the two PhD courses Comparative Welfare State Studies and Social Science Gender and Diversity Research are offered every year across the Doctoral School Society and Globalisation, Roskilde University, and the Doctoral School of Social Sciences, AAU. The network is coordinated by Hanne Marlene Dahl and Ann-Dorte Christensen, AAU.

PolForsk

The social science doctoral school was funded by the Danish Agency for Science, Technology and Innovation from 2002-2012. The programme was cross-institutional and included University of Copenhagen, Aarhus University, University of Southern Denmark, Roskilde University, AAU and the Danish Institute for International Studies. Throughout the period, administration of the programme was placed at Roskilde University with Eva Sørensen as the director and Asbjørn Sonne Nørgaard as the latest chairman. Lars Torpe has represented AAU in the programme board. PhD students from AAU have participated in courses in quantitative and qualitative method offered by Aarhus University and University of Southern Denmark. Only few PhD courses under PolForsk have been held at AAU.

Network for Educational Research

The doctoral programme Education, Learning and Philosophy was earlier a part of the defunct national doctoral school Organisational Learning (DocSol). The programme is now associated with a national network for education and a Scandinavian network for action research.

Network for History, Archaeology and Ethnology

Historians from the doctoral programme SPIRIT participate in this relatively new research network, which among other things organises an annual workshop for PhD students in connection with the annual meeting of the Society for Contemporary Historical Research.

International Research Education Partnerships

In realisation of the strategic action plan, and with reference to the Internationalisation Strategy for the faculty, various initiatives were launched in 2012 to strengthen the international profile of the doctoral school:

- Rules, guidelines and other relevant information from the doctoral school are made available in both Danish and English
- More than half of the courses are offered in English
- Increased focus on study periods abroad for PhD students
- Increased coordination and more formalised frameworks for international doctoral research cooperation, including a) adoption of policy and guidelines for entering international educational partnerships; b) description of procedures for entering framework agreements and individual agreements on joint degree projects and double degree projects; c) preparation of templates for entering framework agreements and individual agreements about joint degree projects and double degree projects.

In fall 2012, the reformed organisational framework resulted specifically in the first two bilateral agreements for international doctoral education partnerships:

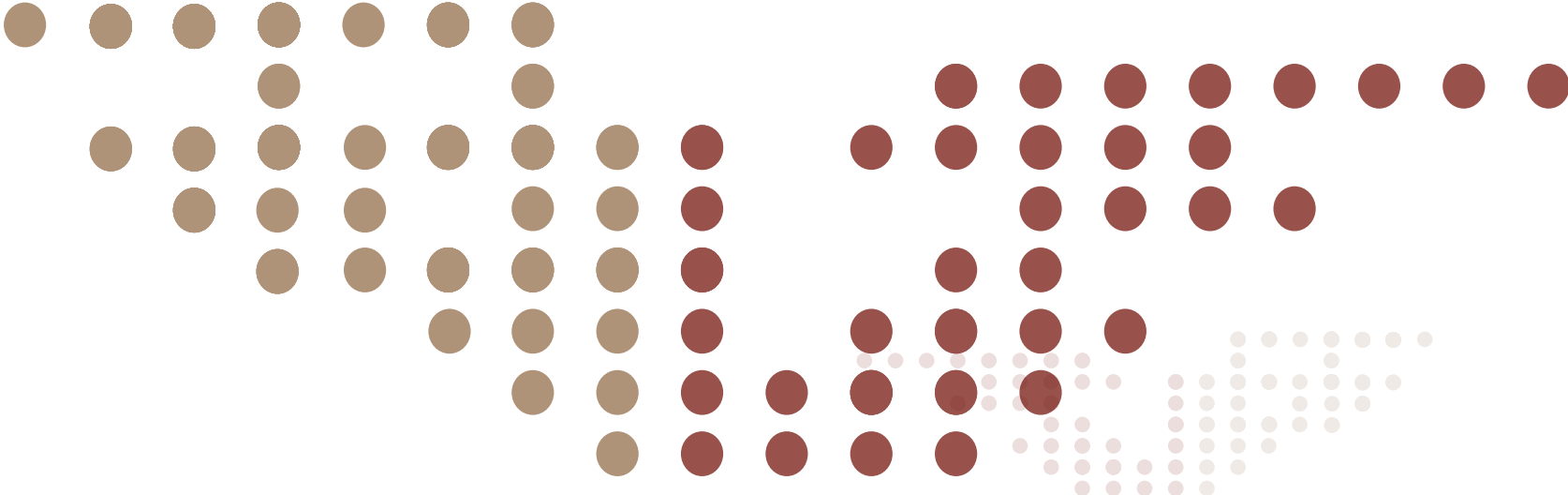
1. The Faculty of Health Science, University of Málaga, Spain

So far, one individual agreement about a double degree project.

2. Quilmes National University, Argentina

So far, one individual agreement about a joint degree project.

In late fall 2012, an initiative was launched to enter a framework agreement with University of Ghent in Belgium. It is expected to take effect early 2013 with the first individual agreement about a joint degree project.





Phd Courses in 2012

Samtidshistorie

February 3-4
Keynotes: Tor Egil Førland, Universitetet i Oslo, Lars Erslev Andersen, DIIS, Poul Villaume, KU m.fl.
Organisers: Niels Arne Sørensen og Mogens Rüdiger
14 participants
(i samarbejde med Selskabet for Samtidshistorisk Forskning)

Implementering af Kvalitetsforbedringer i Sundhedsvæsenet

February 16-17
Keynotes: Jacob Anhøj og Vibeke Riscel, Dansk Selskab for Patientsikkerhed samt Jan Mainz, SDU og Aalborg Psykiatrisk Sygehus
Organisers: Lars Ehlers, AAU, Jan Mainz, SDU
12 participants

Social Justice and the Good Life?

Several courses: February - May
Keynotes: Birgit Pfau-Efinger, University of Hamburg; Björn Halleröd, University of Gothenburg
Organiser: Per H. Jensen
9 participants
(co-operation with the VoF-Research Programme)

Challenges to the Welfare States? Immigration, Diversity and Populism

March 1-2
Keynote: Markus M. L. Crepaz, University of Georgia
Organisers: Susi Meret and Martin Bak Jørgensen
10 participants

Intersectionality, Belonging and Transnationalism

March 12
Keynotes: Ann Phoenix, University of London
Nira Yuval-Davis, University of East London
Organisers: Birte Siim and Ann-Dorte Christensen
9 participants
(co-operation with the VoF-Research Programme)

Why Do Social Research? A Personal Answer

March 14
Keynote: Keith Tester
Organisers: Anders Petersen and Michael Hviid Jacobsen
5 participants.
(co-operation with the VoF Research Programme)

Flowskrivning

March 28
Teacher: consultant Bo Skjoldborg
Organiser: Ann-Dorte Christensen
17 participants

Flowskrivning

March 29
Teacher: consultant Bo Skjoldborg
Organiser: Ann-Dorte Christensen
18 participants

Space, Belonging and Contemporary Life

April 26
Keynote: Vince Miller, University of Kent
Organisers: Mia Arp Fallov og Anja Jørgensen
5 participants

Innovation and Entrepreneurship

April 16-20
Keynote: Hans Landström, Lund University
Organiser: Jesper Lindgaard Christensen
16 participants
(co-operation with FiOI Reseach Programme)

Community and the Sea in the Age of Sail

May 24-25
Keynote: Marcus Rediker, University of Pittsburg, USA
Organisers: Torben K. Nielsen and Johan Heinsen
31 participants

Research Frontiers in International Business

May 29-30
Teachers: Olav Jull Sørensen, John Kuada, Hans Gullestrup, Romeo Turcan, Svetla Marinova, Reimer Ivang, Brian Wæhrens
Organisers: Olav Jull Sørensen, Svetla Marinova
17 participants

PhD Summer School: Qualitative Research Methods and Data Analysis

August 22-24
Keynote: Gary Alan Fine, Northwestern University, USA.
Organisers: Michael Hviid Jacobsen, Søren Kristiansen, Rasmus Antoft og Ann-Dorte Christensen
21 participants

Quantitative Research Methods

October 1-5
Teacher and organiser: Thomas Schøtt, SDU
14 participants
(co-operation with FiOL Reseach Programme)

Modern Sociological Theory

October 2-5
Keynote: Derek Layder, University of Leister, UK
Organisers: Poul Poder and Antje Gimmler.
16 participants
(co-operation with Department of Sociology, Copenhagen University)

Academic Information Mangagement

October 11
Teacher and organiser: Bente Lope, AUB
9 participants

Anvendelse af videnskabsteori i ph.d.-afhandlinger

November 26
Teachers og organisers: Antje Gimmler og Anders Petersen
Workshop: 6 participants

Sundhedsvæsenets organisation og ledelse

November 30
Keynotes: Rune Axelsson og Susanne Bihari
Organiser: Janne Seemann
6 participants

The list contains PhD courses, which are entirely or partially funded by the Doctoral School of Social Sciences. In addition, the programmes have hosted various decentralised PhD activities and workshops which are described in the reports from the programmes. Some of these activities were funded from elsewhere, in particular the two cross-faculty programmes SPIRIT and Education, Learning and Philosophy.



Sociology and Social Work

Head of Programme:

From 1 April 2012, Professor Annick Prieur
Before 1 April 2012, Professor Ann-Dorte Christensen

Programme Secretaries:

Marianne Morell and Johanne Kær Berg

Programme Board:

Professor Lisbeth Knudsen
Professor Lars Uggerhøj
Professor Janne Seeman
PhD student Vibeke Graven
PhD student Mette Rømer

The doctoral programme in Sociology and Social Work has a profile tightly linked to the department's core fields of research, namely sociology, social work as well as work life and organisation. For several years the activities were connected to a cooperation in research education between Aalborg University and Roskilde University through the doctoral programme Welfare and Diversity (2003-2012), but they are today organised through the Faculty's Doctoral School of Social Sciences. The programme has in 2012 been through a considerable growth from 22 PhD students in January 2012 to 37 in January 2013. The students are connected to one of the Department's research groups:

- CASTOR - Center for sociologiske analyser af sociale transformationer (5 PhD students)
- SAGA - Sociologisk Analyse - Grund- og anvendt forskning (3 PhD students)
- SocMaP - Forskningsgruppen for demografi, socialgeografi og sundhed (2 PhD students)
- FoSo – Forskning i Socialt Arbejde (18 PhD students)

- LEO – Faggruppe for arbejdsmarked, uddannelse og organisation (1 PhD student)
- Org&Eva/ COMA - Center for Organisation, Management and Administration (in cooperation with Department of Political Science) (8 PhD students)

The PhD students have their primary connection to the research group of their main supervisor, but may participate in activities organised by other research groups. Each research group has a responsibility for providing the PhD students opportunities to present their research projects or research papers and have them discussed at several occasions during their enrolment as PhD students. The PhD students at the department have formed networks in Aalborg and in Copenhagen: GISP and AHA.

In 2012 there has been established a cooperation for courses in sociology with Department of Sociology at Copenhagen University. The first course in this series took place in the fall term of 2012, while the next is scheduled for the spring term 2013. Within the field of social work courses are developed in connection with a well-established cooperation for the organisation of summer schools, with the participation of representatives from Estonia, Latvia, Lithuania, Norway, Sweden, Finland and Denmark. The cooperation has been working since 2008, with summer schools in social work from 2009 to 2013, with support from NORDFORSK. Within the field of organisation studies there has been a close cooperation for the development of courses with the Department of Political Science. Finally, the program is a part of the embedment, decided by the doctoral programme Welfare and Diversity.

ACTIVITIES

As stated in part 1 of the Annual Report, the programme has been in charge of five PhD courses in 2012, with participation of in all 87 PhD students. In addition comes the co-charge for the summer school in social work that took place in Finland 6-10 August. A joint meeting for all the department's PhD supervisors has been held, with a discussion about expectations to the supervisor as the main theme. Three joint meetings with the entire department's PhD students have also been held, with respectively the writing of a thesis, the evaluation of a thesis and the handling of teaching obligations as the main themes. Two meetings have also been held in the counselling board. The head of doctoral programme has further had continued contact and several meetings with the head of department and the director of the doctoral school.

Enrolled PhD students in 2012

Allan Stevn Bach:

"Børn skal støttes ikke styres"

Ane Grubb:

"Nye deltagelsesmønstre og deltagelsesformer blandt unge i frivillige sociale organisationer"

Anette Skals:

"Depression: beskæftigelse og behandling - socialarbejderens koordinering af sundhedsfaglige og beskæftigelsesfaglige indsatser"

Anne-Kirstine Mølholt:

"Anbragte unges overgang til et selvstændigt voksenliv"

Bodil Margrethe Nielsen:

"Psykiatriens rolle i ambulante psykiatriske patienters helbredsmæssige livsstil i et hverdagslivsperspektiv"

Dorte Raaby Andersen:

"Følelsesmæssige krav i arbejdet"

Jannie Kristine Bang Christensen:

"TeleCare Nord - organisatoriske udfordringer i det tværsektorielle samarbejde"

Jon Dag Rasmussen:

"Hverdagsliv og livsvilkår for ældre mennesker med få resourcer"

Maria Bülow:

"Udsatte børn og unge"

Marie Nykjær Brejnrod:

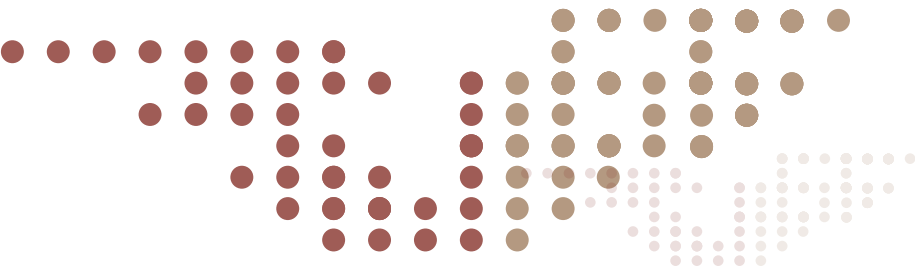
"Tidlig indsats i praksis i barnets tre første leveår - en undersøgelse af børne- og undervisningsområdet"

Mette Rømer:

"Domfældte Udviklingshæmmede - Den socialpædagogiske indsats betydning for voksne med udviklingshæmning med dom på botilbuddet Bakkebo"

Sabine Jørgensen:

"Samspil mellem forældre og sagsbehandlere i sagsprocesser på børneområdet - grænsedragninger mellem frivillighed og tvang"





Sociology and Social Work

Awarded Degrees in 2012

Charlotte Overgaard

Care closer to home - what does it offer? A study of safety and quality of maternity care in free-standing midwifery units
Date of awarded degree: 27 august 2012

Summary: The thesis is a multidisciplinary study of childbirth and maternity care services, drawing on concepts and methods from the field of sociology, epidemiology and midwifery. The primary aim was to compare perinatal and maternal morbidity, birth complications and interventions as well as women's birth experiences, care satisfaction and perceptions of care in two freestanding midwifery units (FMU) and two obstetric units in northern Denmark, all pursuing an ideal of high-quality, humanistic and patient-centred care. The study was designed as a cohort study with a matched control group. Of the 1678 low risk women participating, 375 also filled out a postal questionnaire 28 days after birth. FMU care was found to offer important benefits for birthing women in terms of improved birth experience and care satisfaction and reduced maternal morbidity with no additional risk to the infant. The effect of birth-place on clinical outcomes did not vary with women's level of social disadvantage but a potential of FMU care to mitigate the effects of social disadvantage on women's birth experience was identified. The findings support a policy of offering low risk women a free and informed choice of place of birth.

Annette Quinto Romani

What causes childhood obesity and inactivity?
Date of awarded degree: 17 December 2012

Summary: The main purpose of the thesis was to uncover: To what extent do respectively families, schools and peers affect childhood obesity and inactivity?The study used a randomised school-based intervention study in the Municipality of

Aalborg which took place during the period of fall 2008 until fall 2010. All schools were randomised into intervention or control schools. Three different data sets were linked and used: test data, survey data and register data. The thesis is based on five papers, of which some of them deal with the impact of family socioeconomic background, whereas the rest deal with the impact of schools and peers. The results clearly indicate that a medical sociological model mainly focusing on lifestyle is too narrow, and that social structural factors also need to be considered if the aim is to improve overall child health as well as reduce the gap in childhood health inequality.

Merete Monrad

Caring With Co-Workers: The Collegial Embeddedness of Emotional Labor
Date of awarded degree: 17 December 2012

Summary: The thesis is about performing paid care work in a collegial context. The thesis focuses on childcare in day care institutions and eldercare in nursing homes. The thesis examines relationships between emotional labour and collective processes among co-workers and the impact of these collective processes and emotional labour on the well-being of workers. Theoretically the thesis is inspired by approaches from the sociology of emotions, particularly structural, cultural, ritual and symbolic interactionist approaches, but it also draws on theories of group processes and a governmentality perspective. The thesis is based on survey and interview data. The thesis argues that emotional labour in institutional care is collegially embedded and that this embeddedness in significant ways affects the emotional labour performed and the well-being of workers. This embeddedness has generally been overlooked in research on emotional labour and the thesis argues that this is a substantial neglect, since the embeddedness of emotional labour is crucial for the working life of people performing care work.

Political Science

Head of Programme:

Professor Anette Borchorst

Programme secretaries:

Birthe Libergren and Ann Lindkvist Jensen

A common theme of the doctoral programme in Political Science is changes in the economic, political and administrative system, the public sector and in the state-market relation. PhD students should acquire a sound knowledge of classical and modern theories, analytical approaches and concepts as well as in the field of analytical methods and techniques.

The programme is connected to the following research units:

- The Center for Comparative Welfare Studies (CCWS)
- Centre for Labour Market Research (CARMA)
- Organisation and administration
- Center for IS Management
- Center for Mobility Research
- Political Communication, identity and participation
- Research Center for Evaluation (FCE)
- Economics, Business and Politics
- Global Refugee Studies (GRS)
- Center for Opinions and Analysis (COPAN)
- Center for Organisation, Management and Administration (COMA)

ACTIVITIES

The programme activities in 2012 were influenced by the fact that the number of enrolled students was more than doubled (starting from autumn 2011). This has fa-

cilitated the organisation of common activities, and it has generated challenges, especially in ensuring that the PhD students are able to meet their teaching obligations. Finally, it has called for increasing focus on career opportunities in a broad sense, i.e. inside and outside the university.

- In March, a meeting about of PhD plans was organised for PhD students and their supervisors
- In October, a cafe with three sessions on the life as PhD was held at the yearly Department seminar. The debates focused on teaching obligations, career planning and internationalisation
- In December, The PhD area: new rules - important focal points, a meeting for seniors in Aalborg and Sydhavnen (with video participation) was organised. The following themes were addressed: PhD school guidelines, divisions of labour between the department, head of programme, research managers and supervisors and experience in relation to the PhD processes

The PhD group has established a club that holds lunch meetings twice a month. The head of programme participates app. twice per semester in these meetings, when there is new information or issues to be discussed with PhD group.

The department has a mentoring scheme for plus PhD, attached to the individual research units. The Department has concluded several contracts with external organisations and has worked to clarify and balance requirements for PhD students with full or partial external funding.

The Programme participated in two cross-institutional research programs, PolForsk and Welfare State and Diversity (VOF). Part of its tenured researchers organised



Political Science

and/or taught courses in these programmes.

In October, the programme organised a research design workshop with Professor Ove Kaj Pedersen for all department PhDs. In addition, 9 PhD students presented at a common seminar between CARMA and CCWS. CCWS that has the largest group of PhDs (13 in total), organised from February to May 2012 a PhD course, Social Justice and the good life with senior presentations and PhD presentations.

Internationalisation

In 2012 four PhDs with foreign backgrounds were enrolled, and this has increased the internationalisation of the programme, where virtually all communication now takes place in English. It has also placed new demands on the program in relation to the introduction of PhD students. The Programme participates in The Interdepartmental Centre for Research Training in Economics and Management (CIFREM), University of Trento, DARSIS - The Danish Research School of Information Systems and through AAU membership Scancor (Scandinavian Consortium for Organisational Research) in a Nordic-American networking between Nordic universities and Stanford University, USA.

The internationalisation of the programme is strengthened by the fact that now two research units focus at international affairs.

Several PhD students studied abroad in 2012, among these were stays at

- Nordic Centre, Fudan University, Shanghai
- Hermann Paul School of Linguistics Basel-Freiburg Institute, Basel University
- AStri Network, Leiden

Enrolled PhD students in 2012

Allan Overgaard Freiheit:

"Digital Innovation"

Anne Juul Pedersen:

"Frivilligcentre – et knudepunkt i samarbejdet mellem det offentlige og den tredje sektor"

Hanne Dahl:

"Velfærdsstatens religiøse rødder"

Hans Henrik Jørgensen:

"Hvad virker i beskæftigelsesindsatsen for ikke arbejdsmarkedspare borgere?"

Ismat Mahmuda:

"Ensuring Food Security by the Social Safety Net programmes; A Study on the Rural Extreme Poor Households of Bangladesh"

Makiko Morita:

"Linking Everyday Life to Active Ageing Policy: Elderly Couples in China and Denmark"

Maria Louise Johansen:

"Sammenhængende patientforløb"

Mathias Herup Nielsen:

"Forandringer af velfærdsstatens værdigrundlag"

Troels Fage Hedegaard:

"Holdninger til den nordiske velfærdsstat og dens ydelser, service og organisering"

Yezer Yezer:

"Social Policy at the Crossroad - Rethinking the nexus between Education and Health in Bhutan"

Degrees awarded in 2012

Søren Stentoft Herping

Jagten på den gode krisekommunikation - Et komparativt case studie af krisekommunikation i danske kommuner?

Date of awarded degree: 27 August 2012

Summary: The thesis addresses crisis communication within municipalities in Denmark, and it examines the interaction between organisation, decision making processes and crisis communication within the Danish local level government. Based on a comparative, deductive case design the causality between the three factors are examined in three cases, giving an opportunity for making variation on crisis type as a form of control variable. The theoretical hypothesis is that good organisational conditions generates a higher degree of rationality in the decision making process, where the thesis contributes with the term rationality of crisis communication, thereby having a positive effect on the actual crisis communication, which helps protect the reputation of the municipality. The empirical study supports this thesis and an important contribution in the thesis is, that municipalities, who communicates in a crisis, can protect its reputation by strengthening the organisational setup. The thesis thereby contributes not only to the academic literature by being the first study on the field, but also to the empirical field that it studies.

Morten Hjelholt

Discourse as a strategic resource. IS adoption processes between national and local levels

Date of awarded degree: 24 September 2012

Summary: The PhD dissertation focuses on of new media (ICT) as a political concept over the past 30 years. It is identified how at one point in time information technologies are strategised as an administrative tool for education, knowledge and improved democracy (illustrated in the strategies The In-

fo-Society 2000 and The Digital Denmark). A transformation into the notion of information technology as a strategic tool for efficiency is identified in close relation to concepts of service and quality (e.g. illustrated in Strategy for E-Government 2007-2010). A specific focus is given to how strategising processes organises a space between the national and the local institutions. It is analysed how local actors are expected to take and create these spaces to produce visibility and signal performance. In this way, the strategy practices functions as an organising technology with the discursive production of the information technology as its main tool.

Anne Mette Hansen

IS and Business Leaders' Strategizing - An Investigation into Organizational Learning Practice and Theory

Date of awarded degree: 5 November 2012

Summary: In dynamic environments, IS and business leaders must develop new IS strategic objectives and move quickly towards new opportunities, while be good at exploiting the value of current assets and reducing the costs of existing operations. Drawing upon organisational learning theory, this involves two learning processes: exploration and exploitation. The dissertation expands existing theory in several ways. First, it contributes to the IS strategy literature by providing a detailed and rich description of IS and business leaders' explore and exploit during IS strategising. Second, it informs organisational learning theory by providing fundamental new insights to the 4I framework, extending our knowledge of its core constructs and revealing a potential pitfall of using the framework. Finally, the dissertation informs leaders engaged in IS strategising by providing detailed insight into IS and business leaders' learning processes and offering recommendations for how other organisations may learn to adapt their IS strategy in response to dynamic shifts in the business environment.



Business and Innovation Economics

Head of Programme:

Associate Professor Christian Richter Østergaard

Programme secretaries:

Inger Vejrum and Nancy Raakær

The doctoral programmes in Business and Innovation Economics are located at the Department of Business and Management.

The focus areas of the Business Economic doctoral programme are international managerial economy, organisation, strategy, auditing and management accounting. The programme was established in 2008. It is connected to the following research groups:

- MAC (Management Accounting and Control)
- IBE (International Business Education)
- FIRM (Firms, Innovation, Relationship & Management)

The doctoral programme is connected to the PhD network DOME (doctoral programme in organisation and management theory) that is an inter-university collaboration between Aalborg University, University of Southern Denmark, Roskilde University and Aarhus University

The doctoral programme Innovation Economics centres on the key elements of economic development, knowledge, innovation, entrepreneurship, macroeconomics, health economics and creativity. The programme in Innovation Economics has existed since 1996, but was changed in 2008. In recent years new topics have been added to the programme, such as macroeconomics, health economics and creativity. It is connected to the following research groups:

- IKE (Innovation, Knowledge and Economic dynamics)
- EOB (Entrepreneurship and Organisational Behavior)
- MaMTEP (Macroeconomic Methodology, Theory and Economic Policy)
- ORCA (Organisational Renewal Creativity Applied)
- DCHI (Danish Center for Improvement in Health Care)

The programme is connected to the inter-university col-

laboration DRUID (Danish Research Unit in Industrial Dynamics), where the IKE and EOB groups are participating in close collaboration with researchers from Copenhagen Business School and University of Southern Denmark. One of the main events in the DRUID network is the annual DRUID Academy conference. The conference is only for PhD students and focuses on the development of their skills and research papers. There is also a few keynote presentations from international top researchers. The participants are mainly from European top universities but there is always participants coming from North America, South America and several Asian countries.

ACTIVITIES

11 new PhD students have been enrolled of whom six is in Business Economics and five is in Innovation Economics. Two of the new positions are Industrial PhD positions.

The PhD students have participated actively in many national and international PhD courses and conferences. They have also been active in publishing several papers. Furthermore, many of the students have been collaborating closely with companies and public organisations.

The annual DRUID Academy conference for PhD students within the fields of economics, entrepreneurship and management of innovation, technology and organisations took place at The Moeller Centre in Cambridge UK in collaboration with UK-IRC, University of Cambridge and Imperial College London. 65 PhD students participated in the conference selected from 130 applications. In addition 25 faculty members participated from Aalborg University, Copenhagen Business School, University of Southern Denmark, University of Cambridge, and Imperial College. The PhD students from the Innovation Economic programme organised a DRUID PhD day with presentations from 15 students from Aalborg University, Copenhagen Business School, and University of Southern Denmark.

Internationalisation

The PhD students have increasingly participated in international conferences and PhD courses. Several foreign PhD students have visited the Department of Business and Management and several of the students in the two programmes have stayed at universities abroad. For example at Stanford, US and at The Sino-Danish Center for Education and Research (SDC) in China. Many PhD students have been teaching at the master in Innovation Management at SDC in China.

The Innovation Economic programme has been involved in an Erasmus Mundus Action 1 application on a joint PhD programme with Friedrich Schiller University, Jena, Germany, Universiteit Maastricht, Holland, University of Southern Denmark, Scuola Superiore Sant'Anna, Pisa, Italy, Université de Strasbourg, France, Charles University, Prague, Czech Republic, Università degli Studi di Torino, Italy. The application was selected in top 12 out of 133 applications, but it was put on a reserve list with two others.

Enrolled PhD students in 2012

Alexo Fomcenco:

"Mergers and Acquisitions - counseling and choice of method"

Anne Birgitte Søgaard Sørensen:

"Konsoliderende regnskaber, koncernbegrebet"

Daniel Stefan Hain:

"The Economics of Innovation - Investments into Eco-Innovation in the Energy Area"

Diana Valeria Suarez:

"Innovative Strategies in unstable environments: the case of Argentinean Firms"

Flemming Witt Udsen:

"TeleCare Nord: Implementering af telemedicin"

Jonas Strømfeldt Eduardsen:

"Marketing to Digital Natives - a study of consumer behaviour and its impact on marketing strategy development"

Karina Hjørringgaard Jensen:

"Crating Value Through Global Value Chain Positioning And Strategic Management - The Case Of Royal Greenland"

Kim Malmbak Møller:

"Videnskabsteoretisk innovation"

Mikael Randrup Byrialsen:

"Finansiel ustabilitet"

Mogens Sparre:

"Forandring og Organisatorisk fornyelse"

Roman Jurowetzki:

"Systemic energy innovation for sustainable development - towards an integrated understanding of the Danish energy innovation system in the context of the global energy transition"

Rune Frøsig Osmundsen:

"Træningsprogram for Nytænkning: Udvikling af nytænkende individer gennem kontinuerlige træningsseancer. Individer, som i det daglige udviser innovativ adfærd i arbejdet, udfordre det eksisterende og handler herpå"

Degrees awarded in 2012

Hui Yan

Standard-setting in Innovation Policy and Industry's Competency Building

Date of awarded degree: 12 March 2012

Summary: This thesis is about the evolution of the Chinese telecommunication industry emphasising the process of standardisation and the role of domestic innovation policy. The empirical basis of the thesis is constituted by documents and a series of expert interviews and seminar discussions. The central question analysed in the thesis is about the role of standardisation in Chinese innovation policy and how standardisation and policy affects the performance of individual firms. This is divided into three research questions: 1) What is the relationship between standard-setting and the indigenous innovation policy of China? 2) How does this standardisation influence the Chinese industry and enterprises? 3) Finally, is Chinese telecom innovation strategy or policy a success or a failure? What general conclusions can be drawn for the



Business and Innovation Economics

analysis in terms of innovation policy? The thesis finds that the standardisation of TD-SCDMA is an integrated part of the national science and technology policy and that some Chinese companies with major support from government were not as successful as some of those that operated with much less government support. Finally it concludes that innovation policy was successful in the sense that the standardisation established a platform on which Chinese telecom firms could grow but at the same time that the attempt to promote a specific company, Datang, did not succeed.

Jacob Rubæk Holm

Adaptive Evolution Through Selection: How Populations of Firms Adopt to Changing Environments

Date of awarded degree: 12 March 2012

Summary: This thesis is structured as an anthology. It consists of six chapters. Five of these are independent research papers presenting research that the author has undertaken during his PhD. The remaining chapter (the introduction) suggests a unifying theoretical framework. Seen from the perspective of this framework the five papers all contribute to understanding of how populations of firms adapt to changing environments. In the second chapter a theory is suggested for organisational learning and adaptation. The implication of the theory is that organisational heterogeneity along factors otherwise regarded as unwanted: slack and inertia; are consequences of diverse routines for learning and adapting. The following two chapters deal with empirical evidence for adaptation at the population level while the final two chapters discuss adaptive change in organisations and populations in relation to environmental change.

Kristian Nielsen

Bringing the Person and Environment together in Explaining Successful Entrepreneurship - A Multidisciplinary and Quantitative Study

Date of awarded degree: 30 January 2012

Summary: Entrepreneurship is studied in a broad range of disciplines including psychology, sociology, and economics. However, the main research questions of interest are: why

they act? (the causes of entrepreneurship), how they act? (the entrepreneurial behaviour), and what happens when they act? (the effects of entrepreneurship). This dissertation pursues the broad research questions "Who becomes an entrepreneur?" and "Who makes the right decision to become an entrepreneur?" from a multidisciplinary approach bringing together both the inner and outer environment. Through the four chapters making up this dissertation, the inner environment is an individual's three categories of means: who they are (their identity), what they know (their knowledge base), and whom they know (their networks). The outer environment is in the first part of the dissertation the entrepreneurship environment where the two research questions are studied for (potential) novice and habitual entrepreneurs. For the second part, the outer environment is defined by industry and geography for (potential) novice entrepreneurs.

Pernille Gjerløv-Juel

Organizational disruptions and firm performance - a quantitative study

Date of awarded degree: 5 November 2012

Summary: Organisational disruptions are any events that alter organisational routines or key features of an organisation in a way that disrupts the internal organisational processes. These disruptive events have the potential to push the prevailing organisational "equilibrium" out of balance, destabilising the system and creating something new. While some studies argue that organisations are generally flexible and adaptive at baseline, organisational ecologists argue that organisations are generally inert and hence vulnerable to organisational disruptions. The thesis addresses the overall research question by empirically investigating three different types of organisational disruptions and their effects on firms' subsequent performance. These disruptive events include top employee migration, an unexpected death among top management teams, and the rapid employment growth of start-ups. Theoretically, the thesis is based on the organisational ecology literature. The thesis concludes that radical organisational changes are, overall, disruptive to organisations, with detrimental effects on a firm's subsequent performance.

SPIRIT

Head of Programme:

Professor Mogens Rüdiger

Programme secretary:

Marianne Høgsbro

Programme Committee:

Professor Mogens Rüdiger

Professor Søren Dosenrode

Professor Ruth Emerek

Professor Li Xing

Professor Birte Siim

Associate Professor Torben Kjersgaard Nielsen

Associate Professor Bodil S. Blichfeldt

PhD student Betina Verwohlt

SPIRIT is an interdisciplinary doctoral programme for the systematic study of themes and theoretical issues related to the intertwining of political, cultural, and socio-economic processes, with particular emphasis on contemporary globalisation trends and their historical preconditions.

It is dedicated to examining - from the combined vantage point of both the human and the social sciences - cultural, political and socio-economic issues on a spectrum ranging from the local and regional dimension over the national level to the transnational global processes that increasingly impinge on the organisation of life and the structure and dynamics of the world. SPIRIT's research is conducted within four broad themes:

- Transnational change, where the understanding of globalisation and internationalisation and character development is in focus;
- Inter-regional developments and conflicts, such as integration or regionalism, i.e. involving governance and development strategies;
- Identity and globalisation, i.e. focusing on gender conflicts, nation, class and ethnicities in the globalising world;
- Intercultural production and consumption, such as companies' handling of transnational challenges, tourism and everyday life are explored.

ACTIVITIES

SPIRIT has had 3 programme meetings in 2012, on 15 February, 25 April and 5 September.

• **Seminar for the supervisors at the programme on 2 February, organised by Mogens Rüdiger:** The purpose of the meeting was exchange of experience and an introduction the supervisors about the obligations they have as supervisors.

• **Method Reflection Seminar 1 June 2012:** The aim of the method reflection seminar is to raise the consciousness about different and - maybe - common problems about how to build a logical and consistent argumentational structure in a PhD dissertation Martin Bak Jørgensen and Poul Duedahl organised this seminar. 8 PhD students participated.

• **PhD workshop 28 September 2012:** One-day kick off and PhD workshop, Aalborg University Campus Copenhagen. The aim was to provide PhDs in tourism and related fields with a platform to discuss, develop, and strengthen their research. In this workshop, professor John Tribe examined the relationship between the researcher, the world that is being researched and the way in which the research is presented. 10 PhD students participated.

• **PhD workshop 12-13 June 2012:** Ann-Dorte Christensen was invited to do a presentation "How to do a PhD at Aalborg University" and Julia Zhukova Klausen was invited to do a presentation "Ontological Foundations that Span the Humanities and Social Sciences". The PhD students furthermore presented themselves and their projects. 12 PhD students participated.

• **FREIA's PhD workshop on 1 November 2012:** Two researchers from FREIA gave a presentation about experiences from their own PhD process. PhD students prepared a short presentation about their experiences with the PhD process so far. This is followed by debate about the PhD process and suggestions for improvements. Oral presentations of PhD papers, comments and debate. 8 PhD students participated.



SPIRIT

Internationalisation

Guest PhD students:

- Ivett Sziva, Corvinus University, Budapest, January 2012
- Vanna Nordling, Lund University, Sweden, 1 February -15 April 2012

PhD students studying abroad:

- Elijah Munyi, Tanzania/Nairobi, 27/4-12 – 3/6—12
- Johan Lund Heinsen, UK, 30/09-12 – 10/11-12
- Supriya Samanta, India, 1/10-12 – 29/10-12
- Martin Ottovay Jørgensen, USA, 2/6-12 – 9/7-12

SPIRIT is applying for the EU-project, Lifelong Learning Programme: Erasmus Multilateral Projects.

Enrolled PhD students in 2012

Ashley Kim Stewart:

“China’s Aid and Trade in Africa: Attitudes and Actualities”

Henrik Gjøde Nielsen:

”Folk og fæstning. Relationerne mellem befæstning, by og statsmagt i renæssance og Enevælde - og tanker om deres museale formidling”

Martin Ottovay Jørgensen:

”Peacekeeping in Gaza (1956-1967), Congo (1960-1964) and Cyprus (1964-1992): Towards a global history of peacekeeping and an understanding of the experiences of the ‘peacekept’ based on cases from Danish Peacekeeping Forces”

Degrees awarded in 2012

Zelege Bekele Worku

Factors that affect adverse outcomes of pregnancy among women with ages 15 to 49 in Pretoria: New Findings and Contributions and Recommendations for Policy Lessons for the rest of Africa

Date of awarded degree: 27 August 2012

Summary: A 6-year long survey (2004 to 2009) was conducted in Pretoria, South Africa in order to identify factors respon-

sible for adverse pregnancy outcomes and underutilisation of modern contraceptives and family planning services provided by the CTMM. Data were gathered from a random sample of 8, 497 women aged between 15 and 49 years on socio-economic, demographic, health-related and family planning variables. The thesis concludes there were significant differences among service delivery centers and health districts with regards to adverse outcomes of pregnancy and utilisation of modern family planning services provided by the CTMM. The study showed that unwanted pregnancy and adverse pregnancy outcomes among poor black women constitute a major health problem in and around the City of Pretoria, South Africa. There is a dire need for the promotion of community based family planning services specifically aimed at poor women with ages 15 to 49 years. While it is true that community based clinics are the most efficient health service centers for promoting the use of modern contraceptives and family planning methods, the facilities are underutilised in comparison with hospitals and private sector service providers.

Helle Hjortnæs Kristensen

Regional Policy, Partnership and Institutional Change: exploring the interactions between policy developments at the European, national and regional levels with particular focus on the organisational principle of partnership

Date of awarded degree: 27 August 2012

Summary: The thesis takes its point of departure in the institutional consequences of the partnership requirements for the member states’ regional policy-making institution. The historical development of the Danish regional policy-making institutions is analysed with a particular emphasis on the changes generated from the interpretation and implementation of the partnership organisational requirements. Within a historical institutionalist framework, network governance presents an appropriate theoretical tool for analysing the specific organisation of the regional policy-making organisation, expectedly based on a partnership approach The thesis concludes that the relations between the formal partnership organisation and the informal partnership appear similar to a partnering process. It is argued that in a sense all parties in the informal partnership had a stake in the decision-making of the formal partnership organisation as the decisions concerned their individual area or organisation. Therefore, the informal partnership justified and legalised the formal partnership organisation, or, in other words, without the informal partnership, the formal partnership organisation did resemble a network.

Law and Business Law

Head of Programme:

Associate Professor John Klausen

Programme secretary:

Vibeke Lund Damkier

The programme is anchored in the 3 research groups of the Department, where the PhD students are affiliated with one of the groups:

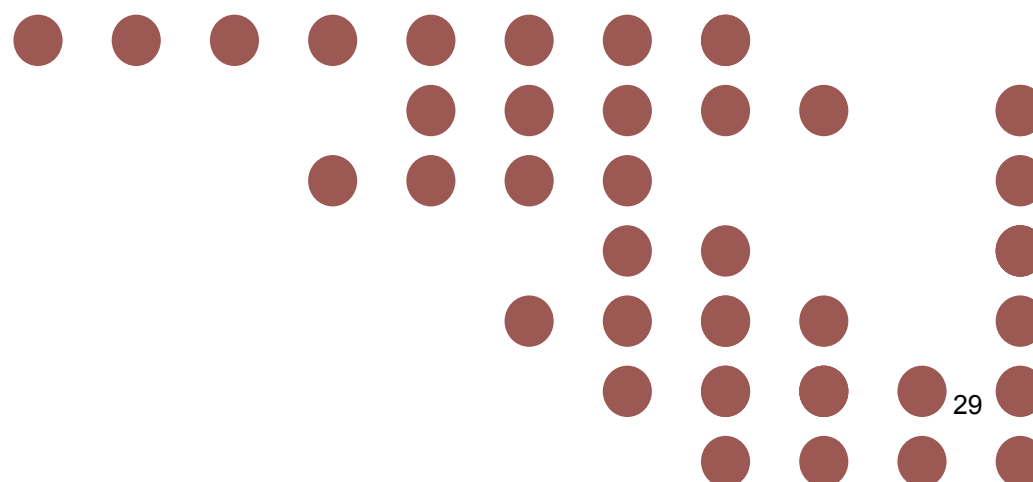
The public - This research group works on the legal relationship between government and citizen. Such areas are administrative law, tax law, criminal law and the interaction between these disciplines. This group includes a subgroup that, during a longer time period, has been working on social justice issues.

Enterprise relationship - In this research, the subjects include classic property law, such as the sale of goods act and collateralisation. Corporate law is also included along with EU law. Several members of this group work with the main legal issues related to the impact of modern technology and the impact of modern information policy, where the main research areas are personal data law, media law, IT-law, communication and information law, IPR and cyber-crime.

The private citizen - The work of this group includes jurisdictions such as family, children and inheritance law. The recent years has seen a relatively large legal development. The group also works with human rights and the legal position of foreigners and refugees.

The doctoral programme in law and business law includes legal research in a broad sense. It covers public law and private law, and includes both national and international law. The aim of the doctoral programme is to contribute to the recruitment of a legal research environment at an international level. The work in the doctoral programme in this context shall be of benefit to the future research at the Department of Law and to the legal expertise of the surrounding community. For this purpose a close cooperation with the private sector and public authorities is strived for.

One of the programme’s PhD students is for instance Network Coordinator in the professional network IPR Nord, a forum for exchange of research, knowledge and experience, where employees can stay ahead with the latest knowledge and research in the field of Intellectual Property Rights (IPR). IPR Nord is part of BrainsBusiness ICT NORTH DENMARK.





Law and Business Law

ACTIVITIES

The PhD students have largely participated in PhD courses developed and offered within the framework of JurForsk, including basic courses and special courses etc. In 2012 JurForsk also held a joint conference on how the doctoral programme and JurForsk can support the individual's future career and how professional networking can be used. Furthermore, there has been participation in a joint Nordic meeting on reciprocal provision of training courses and cooperation in this regard.

Internationalisation

In addition to research stays abroad the PhD students are participating increasingly in international conferences, including the annual conference of the ECFR on corporate group law - Luxembourg; the conference on child abuse and neglect, organised by NFBO - Bergen, Norway; the European law and European private law, horizontal effect of the EU law - Stockholm.

In the JurForsk cooperation a joint Nordic cooperation is being established.

PhD students enrolled in 2012

Helena Lybæk Guðmundsdóttir:
"Cybercrime"

Helene Maria Jensen:
"Koncernret og corporate governance: moderselskabets ledelsesret- og pligt"

Karina Hedegaard Hansen:
"Naturalopfyldelse - hvor går offergrænsen? "

Malene Krogh-Hansen:
"Unionsborgerskabet"

Maria Flindt Pallesen Fonseca:
"Afgørelse af konkurssager, straffesager, og familieretlige sager inden en rimelig frist - menneskeretlige krav til sagsbehandling"

Mette Mortensen:
"Grænser for parter frie bevisførelse i den danske retspleje"

Head of Programme:
Professor Erik Laursen

Programme Secretary:
Dorthe Rosenkilde

Programme Board:
Professor Erik Laursen
Professor Palle Rasmussen
Professor Lars Qvortrup
Associate Professor Eva Petersson
Associate Professor Ulla Thøgersen
PhD student Pia Frederiksen
PhD student Line Revsbæk

The doctoral programme 'Education, Learning and Philosophy' is part of the Doctoral School of the Humanities and the Doctoral School of the Faculty of Social Sciences at Aalborg University. The programme is based in the Department of Learning and Philosophy. There is close collaboration with the doctoral programme 'Technology and Science', also based in the Department, within the Doctoral School of the Faculty of Engineering, Science and Medicine.

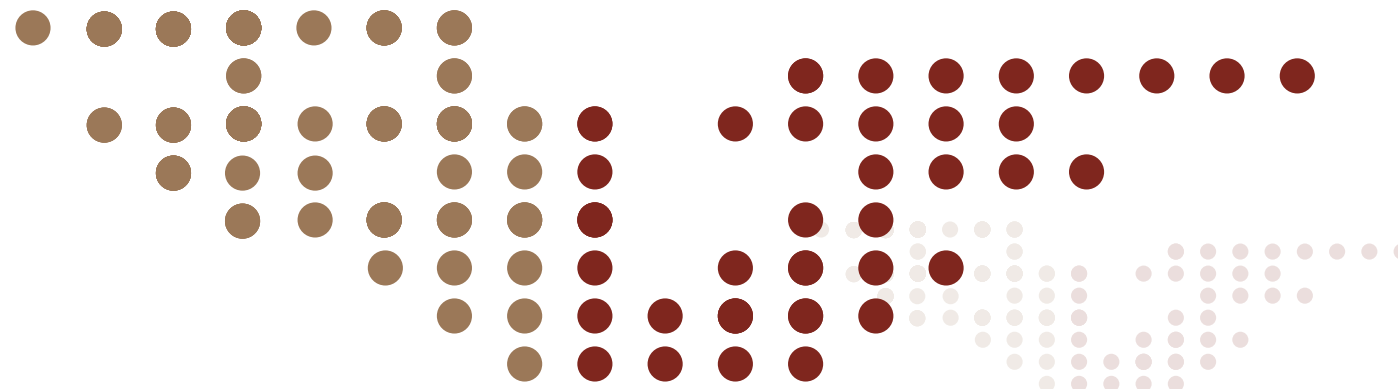
The programme was established in 2000, and especially during the past two years the programme has seen a major growth.

The Department of Learning and Philosophy (<http://www.learning.aau.dk>) is an inter-faculty department, represented in all three Aalborg University campuses (Aalborg, Copenhagen, and Esbjerg).

Research activities of the department comprise 5 major fields of interest:

- Pedagogy and Didactics, including learning theory, learning processes and IT, university pedagogy and problem based learning.
- Organisational learning and workplace learning, including knowledge processes in organisations, creativity and innovation.
- Educational Research, including pedagogic sociology, interculturalism and diversity as well as learning and didactics in the science subjects and mathematics.
- Philosophy, including management philosophy as well as technology and ethics.
- Science Studies, including methodology and interdisciplinary thinking.

Research activities in the department is organised in cross-disciplinary research groups. All PhD students participating in the doctoral programmes are members of at least one main research group. The research groups with their senior faculty members and research projects provide an excellent environment for socialising the students into the practises of conducting research and academic activities. The students for their part make substantial contributions to the activities of the research groups.





Education, Learning and Philosophy

ACTIVITIES

The programme arranges two main types of activity. One consists of workshops aimed at PhD students enrolled in the programme. These are one-day (or half-day) sessions where different themes are taken up for discussion based on brief presentations from seniors and from the students. The other are courses aimed at PhD students enrolled in the programme but also PhD students from other programmes and institutions. These courses generally last two days and include substantial presentations from seniors as well as the opportunity for students to present papers.

February 2012: Workshop: Research question, design, results (Erik Laursen).

March 2012: Workshop: The good PhD project (Lars Qvortrup).

April 2012: Workshop: Managing your PhD project (Palle Rasmussen).

May 2012: Workshop: Publishing in international magazines. (Kathrin Otel-Cass).

August 2012: PhD course: Criteria of quality in PhD work (Paola Valero and Palle Rasmussen).

September 2012: PhD course: Writing interpretative research papers (Paola Valero).

September 2012: Workshop: The different ways of making a PhD project September 2012. (Ann-Dorte Christensen)

October 2012: Workshop: The good PhD project (Lars Qvortrup)

November 2012: Workshop: Doing Action Research in your PhD project (Søren Willert and Gitte Duus)

December 2012: Workshop: How to analyse qualitative data from your PhD project (Ulla Højmark Jensen)

PhD students enrolled in 2012

Karma Utha:

“Formative assessment practices in Bhutanese schools and their impact on the quality of education”

Peter Andersen:

”Ledelse af undervisning(skommunikation)”

Pia Susanne Frederiksen:

”Dissonant læringsmiljø, elevmotiver og læringsadfærd”

Thomas Thyrring Engsig:

”Inkluderende Støtteforanstaltninger i Folkeskolens Almenundervisning - Mellem Individ og fællesskab - En Undersøgelse af Støtteforanstaltningernes Betydning for Elevers Læringsbytte og Deltagelsesmuligheder”

Torben Næsby:

”Fra Analyse til Handlestrategi og Praksis - Udvikling af Pædagogiske Kompetencer”

Torsten Conrad:

”Hvordan omsættes forskningsbaseret viden til praksis i den danske folkeskole? Med Hjørring Kommunes inklusionsprojekt som case”

Vibeke Christensen:

”Nettet Fanger: Multimodale Tekster, Feedback og Læring i Danskfaget i Udskolingen”

DELPHI

Delphi is a network and interest organisation for the PhD students and research assistants at the faculties of Social Sciences and Humanities at Aalborg University.

Delphi initiates activities with the purpose of creating social and professional cohesion across doctoral programmes.

In 2012 there was a presentation by Matthew Johnson from the University of York, who came and presented perspectives on how to get through a PhD in a healthy way. Also, a presentation was held by Unni Fromm from Aarhus University about the process of writing a PhD project: different phases in project writing, various kinds of relations with the PhD supervisor and different approaches to writing. A buddy arrangement was introduced, where some of the more experienced PhD students support and mentor some of their younger colleagues. Lastly the production of a PhD Survival Handbook aimed at new PhD students was commenced.

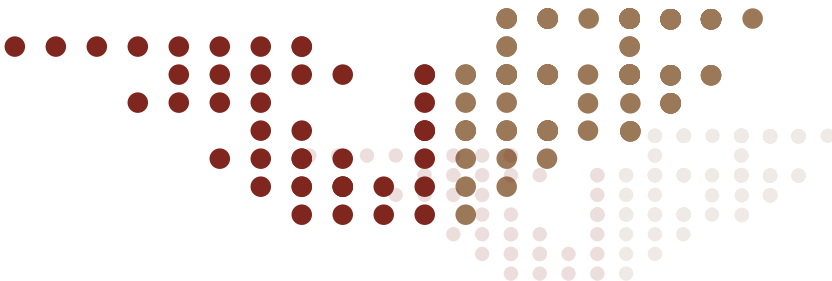
DELPHI BOARD

Chairman:

Makiko Morita (chairman from 1/12 2012)
Lasse Blichfeldt Hansen (former Delphi chairman)

Representatives:

Louise Lund, Sociology and Social Work
Anne Juul Pedersen, Political Sciences
Eun Kyung Park, Innovation and Business Economics
Maren Lytje, SPIRIT
Mette Mortensen, Law and Business Law
Stine Bylin Bundgaard, Education, Learning and Philosophy
Anne Mette Rasmussen, HCCI





OUTLINE DOCTORAL SCHOOL



Professor Ann-Dorte Christensen
Director of Doctoral School of Social Sciences
Chairman of the PhD committee



Professor Annick Prieur
Head of Doctoral Programme,
Sociology and Social Work
Observer in the PhD committee



Professor Erik Laursen
Head of Doctoral Programme,
Education, Learning and Philosophy
Member of PhD committee



Phd student Lars Oddershede
Business and Innovation Economic
Member of PhD committee



Professor Anette Borchorst
Head of Doctoral Programme, Political Science
Member of PhD committee



Associate Professor Christian Richter Østergaard
Head of Doctoral Programme,
Business and Innovation Economic
Member of PhD committee



Phd student Iben Nørup
Political Science
Member of PhD committee



Henrik Marcher Larsen
Secretary of the PhD committee



Professor Mogens Rüdiger
Head of Doctoral Programme, SPIRIT
Member of PhD committee



Associate Professor John Klausen
Head of Doctoral Programme, Law and Business Law
Member of PhD committee



Tove Hau Jensen
PhD administration



Lone Corfixen
PhD administration

For further information:
<http://www.en.fak.samf.aau.dk/>

Layout: Julie Aaen Kjelgaard
Front page photo: Rubjerg Knude
Photographer: Jan Brødslev Olsen